

# Product catalogue '25 26

**MOBILE** HEATING  
COOLING  
DRYING



**THERMOBILE**

mobile climate solutions



## THERMOBILE INDUSTRIES BV

For more than 50 years, Thermobile has guaranteed the development and production of reliable mobile and stationary heating, cooling, dehumidification, advice, efficient delivery and fast worldwide service. Our thinking in solutions and the manufacture of products to our own design and/or customer specifications have resulted in a very complete portfolio that is continuously optimised.

Thermobile distinguishes itself by the quality, reliability and durability of its products. In addition, we strive to offer our customers added value. For every heating issue, we are ready to provide support.

Our quality is guaranteed by the fact that development, production and after-sales service take place under the ISO 9001:2015 quality system.

Naturally, all our Thermobile products comply with the strictest European requirements. Each model bears the legally required CE mark and is also certified according to the EAC standard.



     	<b>TA</b>	Oil-fired without flue gas exhaust	<b>4</b>
     	<b>ITA</b>	Oil-fired with flue gas exhaust	<b>5</b>
     	<b>ITA-R</b>	Oil-fired with flue gas exhaust and carry frame	<b>6</b>
     	<b>IMA</b>	Oil-fired with flue gas exhaust and front burner	<b>7</b>
     	<b>IMAC</b>	Oil-fired with flue gas exhaust in container frame	<b>8</b>
     	<b>MBC</b>	Oil-fired high-efficiency boiler	<b>9</b>
     	<b>MBT</b>	Oil-fired high-efficiency boiler in trailer	<b>10</b>
     	<b>MBSC</b>	Oil-fired high-efficiency boiler in container	<b>11</b>
     	<b>BIO ENERGY</b>	Biodiesel fired with flue gas exhaust	<b>12</b>
     	<b>VAL</b>	Oil-fired infra-red	<b>13</b>
     	<b>GA</b>	Direct propane gas-fired	<b>14</b>
     	<b>MS</b>	Modulating control systems propane gas	<b>15</b>
     	<b>AGA</b>	Directly propane/ natural gas-fired	<b>16</b>
     	<b>CH</b>	Electric heater	<b>17</b>
     	<b>VTB</b>	Electric heater	<b>18</b>
     	<b>BX</b>	Electric heater	<b>19</b>
     	<b>TBD</b>	High temperature electric heater for pest-control	<b>20</b>
     	<b>PRO HEAT</b>	Electric heater	<b>21</b>
     	<b>COOLMOBILE-24</b>	Mobile spot-cooler	<b>22</b>
     	<b>COOLMOBILE-220</b>	Mobile split-unit	<b>23</b>
     	<b>PRO DRY</b>	Mobile dehumidifier	<b>24</b>
     	<b>FUEL TANKS</b>		<b>25</b>
     	<b>AIR DISTRIBUTION</b>		<b>26</b>
     	<b>FLEET MANAGER</b>	Online fleet management	<b>27</b>
     	<b>ACCESSORIES</b>		<b>30</b>
     	<b>LOGISTICS</b>	Gross weights & measures	<b>38</b>
     	<b>FUEL TYPES</b>	Explanation of various fuel types	<b>40</b>

1 kW = 860 kcal/h

1 kW = 3.413 Btu/h

1 kW = 3.6 MJ/h



Diesel/Heating oil



Natural gas



Propane



Biodiesel



Kerosine/Petroleum



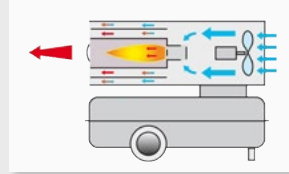
Electricity



HVO



GTL



**TA-80**

**93kW**

## APPLICATIONS

- Heating of well-ventilated storage sheds, work areas, halls, sorting areas, construction sites, greenhouses and polytunnels.
- Heat disinfecting e.g. containers, pest control.
- Drying and storage of bulbs and agricultural products.

## ACCESSORIES

Accessories see page 30



Room thermostat



Insert thermostat

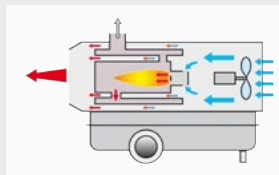
## FEATURES

- All models are equipped with burner relay, photocell flame control and thermostat connection.
- Equipped with a high pressure pump for diesel or paraffin with a 1-way pipe system. (Conversion to a 2-way pipe system for connection with separate fuel tank available as an option)
- The double-walled outer cover stays cool during operation.
- Composed of high-quality sheet metal with powder coating for long service life.
- Hoge uitblaastemperatuur van ca. 450°C.
- 100% fuel efficiency.
- Equipped with ample fuel tank for at least 16 burning hours.

## TECHNICAL SPECIFICATIONS

		22	30	40	80
Capacity	kW	25	30	46	93
Airflow	m³/h	600	600	1.200	2.150
Power consumption 230V	A	1.0	1.0	2.1	3.6
Max. fuel consumption	l/h	2.5	2.7	4.5	9.0
Fuel type		Diesel - Kerosine - HVO			
Fuel tank capacity	l	40	40	80	160
Fuel level gauge		✗	✗	✓	✓
Thermostat connection		✓	✓	✓	✓
Dimensions LxBxH	cm	119*48*60	119*48*60	128*54*80	173*63*90
Weight	kg	31	31	48	69
Item number		40.223.000	40.230.000	40.404.100	40.804.100





**ITA-35**

**24.8kW**

## APPLICATIONS

- Heating of storage sheds, work areas and construction sites.
- Heating of tents, temporary shelters and emergency hospitals.
- Drying and storing agricultural products.

## ACCESSORIES

Accessories see page 30 - 31



Room thermostat



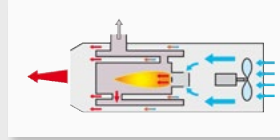
Flue gas pipe

## FEATURES

- Outlet temperature with a delta T of 50°C.
- High-efficiency heat exchanger ( approx. 89% ).
- The ITA Robust version is equipped with tank heating, forklift slots, steel wheels and a protective bracket all around.
- An air duct for recirculation can be connected to all models as an option.
- Lifting bracket available as an option for Robust.
- Composed of high-quality sheet metal with powder coating for a long service life.
- Possibility of connecting air ducts for targeted heating.
- Equipped with a fuel tank for at least 16 hours of operation.

## TECHNICAL SPECIFICATIONS

		35 ST	45 ST	45 ROB	75 ST	75 ROB
Capacity	<b>kW</b>	24.8	45.1	45.1	70.0	70.0
Airflow	<b>m³/h</b>	1.500	3.000	3.000	3.800	3.800
Power consumption 230V	<b>A</b>	1.3	3.3	3.3	4.0	4.0
Max. fan back pressure	<b>Pa</b>	150	200	200	200	200
Discharge cone Ø	<b>mm</b>	300	400	400	400	400
Flue gas exhaust connection Ø	<b>mm</b>	150	150	150	180	180
Max. fuel consumption	<b>l/h</b>	2.4	4.5	4.5	7.0	7.0
Fuel type		Diesel - Kerosine - HVO				
Fuel tank capacity	<b>l</b>	40	80	80	120	120
Fuel level gauge		✗	✓	✓	✓	✓
Thermostat connection		✓	✓	✓	✓	✓
Dimensions LxBxH	<b>cm</b>	125*49*69	163*62*90	168*69*94	201*65*98	192*69*117
Weight	<b>kg</b>	58	105	148	131	165
Item number		41.350.000	41.452.100	41.451.000	41.751.300	41.751.200



**ITA-35 RCS**

**24kW**

## APPLICATIONS

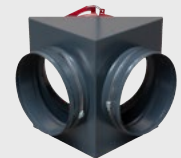
- Heating of various tents including rescue tents, emergency shelters and crew tents.
- Heating decontamination units and emergency hospitals,

## ACCESSORIES

Accessories see page 30 - 31



Air ducts



Air distributor

## FEATURES

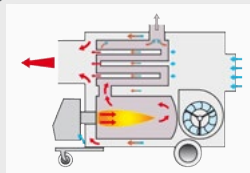
- High-efficiency heat exchanger ( approx. 89% ).
- Blow-out temperature with a delta T of 50°C.
- Supplied complete with chimney and jerrycan connection.
- Equipped with high-pressure pump for with 2-way pipe.
- Equipped with ventilation mode.
- Maintenance-friendly and easy to operate.
- Composed of high-quality sheet metal with powder coating for a long service life.
- R: Supplied with room thermostat with 10m cable
- RCS: Compactly stackable, 2 units on a euro pallet.
- RCS: Optional removable transport wheels accessory.
- RCS: CO detector connection.
- RCS: Heated oil filter supplied as standard.

## TECHNICAL SPECIFICATIONS

		35 R	35 RCS
Capacity	<b>kW</b>	24.8	24
Airflow	<b>m³/h</b>	1.500	1.500
Power consumption 230V	<b>A</b>	1.3	1.7
Aansluiting CO-melder		✗	✓
Max. fan back pressure	<b>Pa</b>	150	150
Discharge cone Ø	<b>mm</b>	300	350
Flue gas exhaust connection Ø	<b>mm</b>	150	150
Max. fuel consumption	<b>l/h</b>	2.4	2.4
Fuel type		Diesel - Kerosine - HVO	
Thermostat connection		✓	✓
Dimensions L*B*H	<b>cm</b>	124*58*62	119*40*80
Weight	<b>kg</b>	61	74
Item number		41.352.000	41.352.490



FLEET MANAGER



## IMA-150 RADIAL

150kW

### APPLICATIONS

- Heating of storage sheds, work areas, halls, sorting areas, construction sites, greenhouses and polytunnels.
- Drying of new construction and renovation projects.
- Drying and storage of agricultural products.

### ACCESSORIES

Accessories see page 31 - 32



Room thermostat



Flue gas pipe

### FEATURES

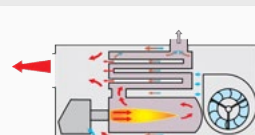
- Automatic burner control with Thermostat connection.
- High-efficiency heat exchanger ( approx. 92% ).
- Blow-out temperature with a delta T of approx. 47°C.
- Equipped with overheating protection and temperature limiter.
- Fuel-efficient thanks to highly efficient heat exchanger and recirculation connection option.
- Easy to maintain and operate.
- Easily movable.
- Transport via wheels, forklift slots or lifting eyes.
- Equipped with intercal industrial burner with flow control. Alternative burners available (Riello oil or gas burner, for example).
- Fleet Manager Essentials possible (see page 27).

### TECHNICAL SPECIFICATIONS

		61 AX	61 RAD	111 AX	111 RDD	111 RHP	150 RAD	150 RHP	200 RAD	200 RHP
Capacity	<b>kW</b>	65	65	110	110	110	150	150	200	200
Airflow	<b>m³/h</b>	4.000	4.000	5.800	8.000	10.000	9.000	11.000	10.000	13.000
Power consumption	<b>A</b>	3.3	6.5	4.4	15	7.5	15	9	15	10
Power connection	<b>V/ph/Hz</b>	230/1/50	230/1/50	230/1/50	230/1/50	400/3/50	230/1/50	400/3/50	230/1/50	400/3/50
Max. fan back pressure	<b>Pa</b>	130	250	130	300	500	300	500	300	500
Discharge cone Ø	<b>mm</b>	400	400	500	500	500	500	500	600	600
Flue gas exhaust connection Ø	<b>mm</b>	180	180	200	200	200	200	200	200	200
Max. fuel consumption	<b>l/h</b>	6.5	6.5	10.9	10.9	10.9	14.8	14.8	19.4	19.4
Fuel type		Diesel - Kerosine - HVO - GTL Optional: Propane - Natural gas								
Thermostat connection		✓	✓	✓	✓	✓	✓	✓	✓	✓
Dimensions LxBxH	<b>cm</b>	162*71*128	199*71*128	179*78*134	223*78*134	223*78*134	246*84*151	246*84*151	271*91*152	271*91*152
Weight	<b>kg</b>	210	245	295	350	340	385	385	450	450
Item number		41.722.800	41.722.300	41.724.800	41.724.710	41.724.210	41.726.650	41.726.000	41.728.650	41.728.010



FLEET MANAGER



IMAC-4000

383kW

## APPLICATIONS

- Heating of storage sheds, workspaces, halls.
- Drying and heating of new buildings and renovation projects.
- Ventilating temporary shelters, tents (during summer).
- Drying of agricultural products.

## ACCESSORIES

Accessories see page 33 - 34



Room thermostat



Flue gas pipe

## FEATURES

- Automatic burner control with Thermostat connection.
- High-efficiency heat exchanger (approx. 92%).
- Outlet temperature with a delta T of approx. 47°C
- EC fan equipped with soft starter.
- Equipped with overheating protection and temperature limiter.
- 2T: Equipped with two-stage burner.
- Equipped with intercal industrial burner with flow control.
- Alternative burners available (Riello oil or gas burner, for example).
- Economical thanks to recirculation connection option.
- Easily movable thanks to forklift slots and lifting eyes, and stackable.
- Equipped with phase sequence relay as standard.
- Fleet Manager possible (see page 27).

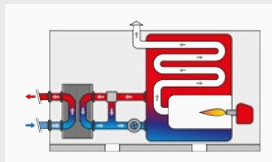
## TECHNICAL SPECIFICATIONS

		On request	On request	On request						
		1200 EC	1200 RDD	1500 EC	2000 EC	2000 S	2000 EC 2T	2200 EC 2T	3000 EC 2T	4000
Capacity	<b>kW</b>	120	110	145	200	200	140/200	140/220	230/295	261/383
Airflow	<b>m³/h</b>	8.500	8.500	10.000	12.000	12.000	9/12.000	9/12.000	13/17.450	18/24.000
Power consumption	<b>A</b>	3.5	15.5	6	6	7.5	4/6	4/6	8.2/5.4	9/20/20.3
Power connection	<b>V/ph/Hz</b>	400/3/50	230/1/50	400/3/50	400/3/50	400/3/50	400/3/50	400/3/50	400/3/50	400/3/50
Max. fan back pressure	<b>Pa</b>	500	350	600	600	600	350/600	350/550	750	400/1000/700
Discharge cone Ø	<b>mm</b>	600	600	600	600	600	600	600	2x600	2x600
Flue gas exhaust connection Ø	<b>mm</b>	200	200	200	200	200	200	200	300	300
Max. fuel consumption	<b>l/h</b>	11.4	10.4	13.6	20	20	13.9/20	13.9/20.5	21.5/27	26/38
Fuel type		Diesel - Kerosine - HVO - GTL    Optional: Propane - Natural gas								
Thermostat connection		✓	✓	✓	✓	✓	✓	✓	✓	✓
Dimensions LxBxH	<b>cm</b>	220*80*135	240*80*135	220*80*135	240*80*135	240*80*135	240*80*135	240*80*135	298*100*165	385*120*201
Weight	<b>kg</b>	467	545	467	545	545	550	550	800	1300
Item number		41.727.000	41.727.550	41.727.500	41.732.000	41.729.600	41.732.010	41.732.020	41.735.000	41.740.500





FLEET MANAGER



**MBC-500**

**250-500kW**

## APPLICATIONS

- Targeted heating of construction sites, sports and major events
  - Mobile heating centre for powerful, efficient heating solutions (for industry).
- Quick to set up, they are ideal for construction sites, emergency heating and other temporary applications such as heat supply during heating system refurbishment or failure.

## FEATURES

- 700 litre water tank for stable operation.
- Ability to use different Fuel types (diesel, HVO and GTL).
- Built on a sturdy galvanised frame and protected by a robust construction.
- Small footprint of 4.6m<sup>2</sup>.
- Easy to transport due to forklift slots and lifting eyes.
- Compact boiler with a large water tank for efficient heating.
- Easy maintenance and use.
- Equipped with various safety systems such as a fire valve, maximum thermostat and pressure relief valve.
- Fleet Manager Essentials possible (see page 27).

## TECHNICAL SPECIFICATIONS

		500
Max output temperature	°C	80
Capacity primary circuit	l	700
Net. Capacity low	kW	250
Net Capacity high	kW	500
Net efficiency 2nd phase	%	>95
Connections secondary circuit	Inch	2 camlock
Power consumption	A	3.2
Power connection	V / ph / Hz	400 / 3 / 50
Max. fuel consumption	l/h	52
Fuel type	Diesel - Kerosine - HVO - GTL	
Sound level @5m	dBA	61
Dimensions LxBxH	cm	385 * 120 * 220
Weight	kg	3100

Item number

30.500.000



FLEET MANAGER



**MBT-350**

**200-350kW**

## APPLICATIONS

- Targeted heating of construction sites, sports and major events
  - Mobile heating centre for powerful, efficient heating solutions (for industry).
- Quick to set up, they are ideal for construction sites, emergency heating and other temporary applications such as heat supply during heating system refurbishment or failure.

## ACCESSORIES



Support legs

## FEATURES

- Built into a sturdy trailer for safe transport.
- Bypass available to connect the MBT to existing circuits with its own water pump.
- Ability to use different Fuel types (diesel, HVO and GTL).
- Ability to connect an external fuel tank.
- Equipped with display for easy operation.
- Powerful internal water pump for large circuits.
- Equipped with various safety systems such as a fire valve, maximum thermostat, minimum & maximum pressure sensors and pressure relief valve.
- When using external fuel tank, it automatically switches from internal to external tank.
- Equipped with Fleet Manager hardware (Calculus) as standard.

## TECHNICAL SPECIFICATIONS

		165	350
Max output temperature	°C	90	90
Net. Capacity low	kW	100	200
Net Capacity high	kW	165	350
Net efficiency 2nd phase	%	>95	>95
Connections circuit	Inch	2 camlock	2 camlock
Power consumption	A	5	6
Power connection	V / ph / Hz	230 / 1 / 50	230 / 1 / 50
Fuel tank capacity	l	700	1500
Max. fuel consumption	l/h	10/16	20/35
Fuel type	Diesel - Petroleum/Kerosin - HVO - GTL		
Dimensions LxBxH	cm	435 * 228 * 266	485 * 228 * 268
Weight EMPTY	kg	1700	2200

Item number	30.165.000	30.350.000
-------------	------------	------------



FLEET MANAGER



**MBSC-350**

**200-350kW**

## APPLICATIONS

- Targeted heating of construction sites, sports and major events
- Mobile heating centre for powerful, efficient heating solutions (for industry).  
Quick to set up, they are ideal for construction sites, emergency heating and other temporary applications such as heat supply during heating system refurbishment or failure.

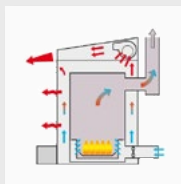
## FEATURES

- Built into a 10ft shipping container for safe transport.
- Bypass available to connect the MBT to existing circuits with its own water pump.
- Ability to use different Fuel types (diesel, HVO and GTL).
- Ability to connect an external fuel tank.
- Equipped with display for easy operation.
- Powerful internal water pump for large circuits.
- Equipped with various safety systems such as a fire valve, maximum thermostat, minimum & maximum pressure sensors and pressure relief valve.
- When using external fuel tank, it automatically switches from internal to external tank.
- Equipped with Fleet Manager hardware (Calculus) as standard.

## TECHNICAL SPECIFICATIONS

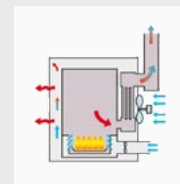
		165	350
Max output temperature	°C	90	90
Net Capacity high	kW	100	200
Net. capacité élevée	kW	165	350
Net efficiency 2nd phase	%	>95	>95
Connections circuit	Inch	2 camlock	2 camlock
Power consumption	A	5	6
Power connection	V / ph / Hz	230 / 1 / 50	230 / 1 / 50
Fuel tank capacity	l	2000	2000
Max. fuel consumption	l/h	10/16	20/35
Fuel type	Diesel - Petroleum/Kerosin - HVO - GTL		
Dimensions LxBxH	cm	2991x2438x2591	2991x2438x2591
Weight EMPTY	kg	2600	2900

Item number	30.166.000	30.351.000
-------------	------------	------------



**BIO ENERGY-1**

**27kW**



**BIO ENERGY-3**

**59kW**

## APPLICATIONS

- Heating of warehouses and other work areas.
- Heating of workshops.

## ACCESSORIES

Accessories see page 34



Burner dish



Flue gas heat exchanger

## FEATURES

- Equipped with axial fan (radial optional).
- Overheating thermostat, automatic protections.
- Odourless combustion of non-fossil fuels (100% biodiesel).
- Built-in day tank of at least 50 litres.
- High/low Capacity control.
- Manual ignition.
- Various non-fossil Fuel types usable.
- Fast and good distribution of heat.
- Environmentally friendly heating of rooms.
- Options for additional heat distribution available: flue booster and duct kit.
- Bio Energy B: "Thermo" as option for additional airflow.

## TECHNICAL SPECIFICATIONS

<sup>1</sup> with thermo option for extra airflow

		B	1	2	3
Capacity min.	kW	20	20	24	36
Capacity max.	kW	27	27	41	59
Airflow	m <sup>3</sup> /h	0 / 800 <sup>1</sup>	800	3.000	3.000
Power consumption 230V	A	0,6	0,6	1,1	1,2
Fuel tank capacity	l	50	50	55	55
Flue gas exhaust connection Ø	mm	150	150	150	200
Min. fuel consumption	l/h	2	2	3	4,3
Max. fuel consumption	l/h	2,7	2,7	4,0	6,2
Fuel type		Bio fuel			
Dimensions LxBxH	cm	54*73*113	54*87*137	82*88*108	82*88*129
Weight	kg	65	76	156	170

Item number

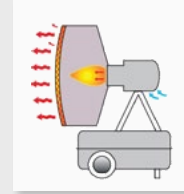
41.905.500

41.906.150

41.921.150

41.911.150





## VAL-6 1-STEP

40kW

### APPLICATIONS

- Local heating of workplaces, storage sheds, workshops and warehouses.
- Reheating and defrosting of machines and materials.

### ACCESSORIES

Accessories see page 34



Room thermostat



Extension cable thermostat

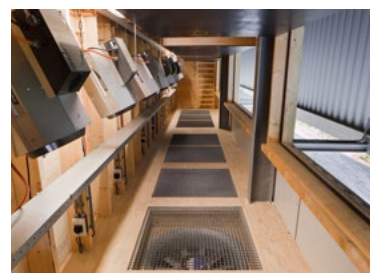
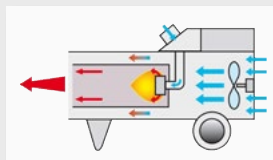
### FEATURES

- Equipped with photocell monitoring for safe operation.
- Stable mobile stand and vertically adjustable head (1-STEP also horizontally adjustable).
- The infrared heater is set up to heat a specific room by its radiant heat. The heater has an exceptionally high efficiency of 100% as all fuel is converted directly into heat.
- Operation via thermostat possible.
- As no Airflow takes place, the infrared heater is exceptionally quiet.
- Low-odour and quiet heat without Airflow.
- EPX: 2-stage burner with larger disc (20% larger) for further heat range. Heated oil filter so that the fuel remains liquid. remains.

### TECHNICAL SPECIFICATIONS

		6 1-STEP	6 EPX	6 KB	MIDI
Capacity	kW	40	40	40	33
Power consumption 230V	A	0.25	0.25	0.25	0.25
Max. fuel consumption	l/h	3.7	3.7	3.7	3.1
Fuel type		Diesel - Kerosine			
Fuel tank capacity	l	40	58	60	35
Fuel level gauge		✓	✓	✓	✓
Thermostat connection		✓	✓	✓	✓
Built-in thermostat		✗	✓	✗	✗
Dimensions LxBxH	cm	120*62*93	124*65*97	91*69*91	71*66*81
Weight	kg	53	50	57	38

Item number	40.106.200	40.106.400	40.106.100	40.106.050
-------------	------------	------------	------------	------------

**GA-110****130kW**

## APPLICATIONS

- Heating of livestock buildings.
- Heating of greenhouses and polytunnels.
- Drying of agricultural products.

## ACCESSORIES

Accessories see page 34



Wall bracket



Wheel set

## FEATURES

- Equipped with burner relay, ionisation flame protection, thermostat connection and hose breakage protection.
- Maintenance-friendly, moisture- and dust-proof control cabinet.
- Clean combustion air through external air intake (models GA-60/85/110).
- All GA models can be connected to a modulating system.
- Can be placed both vertically and horizontally for fan positioning drying installations.
- Suspension brackets and wheel sets optionally available. (wheel set standard with GA-110)
- Large and adjustable capacity.
- KIWA approved.

## TECHNICAL SPECIFICATIONS

		On request				
		24	42	60	85	110
Capacity Min.	kW	16	18	27	39	54
Capacity Max.	kW	31	44	63	93	130
Airflow	m <sup>3</sup> /h	760	760	2.400	2.400	4.000
Power consumption 230V	A	0.60	0.60	0.64	0.64	2.20
Gas connection Ø	inch	3/8	3/8	3/8	3/8	3/8
Working pressure at heater	bar	0,4-1,5	0,4-1,5	0,4-2,0	0,4-2,0	0,4-2,0
Min. fuel consumption	kg/h	1.1	1.4	1.9	2.8	3.9
Max. fuel consumption	kg/h	2.1	3.2	4.8	6.7	9.3
Fuel type		Propane				
Thermostat connection		✓	✓	✓	✓	✓
Dimensions LxBxH	cm	58*37*45	58*37*45	109*46*47	109*46*47	118*53*60
Weight	kg	19	19	36	36	55
Item number		40.274.000	40.277.000	40.707.005	40.707.002	40.710.005



Control system



Gas valve

APPLICATIONS

For crop drying systems in general.

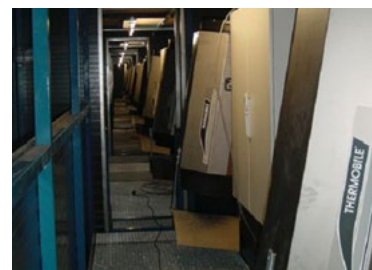
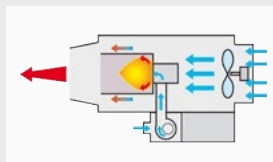
WORKING PRINCIPLE

A modulating self-steering system continuously regulates the burner capacity through the gas pressure of Thermobile gas heaters based on the set desired temperature in the crops to be dried or the room to be heated. Suitable for propane only.

FEATURES

- Parts of the system are available for connection to an external computer for more complex temperature control.
  - Continuous operation greatly reduces rebooting of burner and prolongs equipment life.
  - Complete unit consists of servo motor with gas valve, a temperature controller and sensor.
- Depending on the system chosen, multiple Thermobile gas heaters and control different sections.
  - Modulating gas valve with servo motor in multiple voltages available.
  - Fire protection system available.
  - Ensures continuous air flow.

Max. amount of GA heaters per system	Item numbers see page 31				
	24	42	60	85	110
MS/G 20/40	19	12	8	5	4
MS/G 60	28	18	12	8	6


**AGA-111**
**105kW**

## APPLICATIONS

- Heating of pig and poultry houses.
- Drying of agricultural products.
- Heating of greenhouses and polytunnels.

## ACCESSORIES

Accessories see page 35



Outdoor air intake kit



Pre-pressure regulator

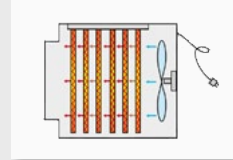
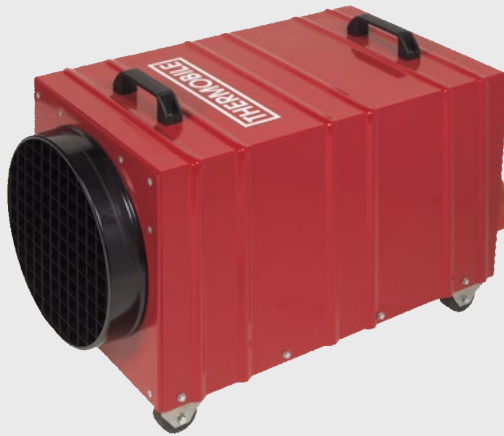
## FEATURES

- Electrical components in moisture- and dust-proof control cabinet.
- Burner with electronic ignition, ionisation protection and Thermostat connection.
- Separate fan for optimising air supply to burner. (except GA-100)
- Blow-out temperature between 100°C - 130°C.
- Direct heat, 100% efficiency.
- Provision for outdoor air intake as an accessory.
- Easy and quick access for service and maintenance.
- Models can be placed horizontally and vertically.
- Large air throw.

## TECHNICAL SPECIFICATIONS

		On request	On request	On request	On request	On request
		45	75	100	111	102
Capacity Max.	kW	45	75	105	105	105
Airflow	m³/h	2.500	4.500	7.000	7.000	7.000
Power consumption 230V	A	1,0	1,9	4,8	5,3	5,5
Air throw	m	15	25	40	40	40
Gas connection Ø	inch	1/2	1/2	1/2	1/2	1/2
Max. fuel consumption, propane	kg/h	3,2	5,4	7,5	7,5	-
Max. fuel consumption, natural gas 25	m³/h	5.0	8.3	11.2	11.2	6.0 -13.9
Max. fuel consumption, natural gas 20	m³/h	4.0	7.1	9.1	9.0	4.3 - 11.2
Fuel type		Propane - Natural gas				Nat. gas
Air supply Ø	mm	-	-	100	100	100
Thermostat connection		✓	✓	✓	✓	✓
Dimensions LxBxH	cm	106*68*40	110*81*52	138*60*85	138*57*85	138*70*85
Weight	kg	37	52	70	84	86
Item number		40.745.200	40.775.200	40.720.070	40.731.050	40.722.100



**CH-12****12kW**

## APPLICATIONS

- Supporting drying projects in e.g. water damage and renovations.
- Heating in (new) construction.

## ACCESSORIES

Accessories see page 36



Room thermostat

## FEATURES

- Equipped with one or more maximum thermostats that switch off the heating elements in case of overheating due to low air flow or blockages thereof.
- Equipped with one or more stainless steel heating elements.
- After cooling, an automatic reset follows.
- Double-walled with an anti-corrosion sheet steel tube and an outer casing.
- The specially designed discharge grille prevents the substrate from being blasted directly or from the dry, warm air, moving too quickly across the floor.
- Separate room thermostat available ( CH-12 18 ) for precise temperature determination.
- Robust heater with high air output.

## TECHNICAL SPECIFICATIONS

<sup>1</sup> with 230V cable. <sup>2</sup> with 400V cable + 32A plug.

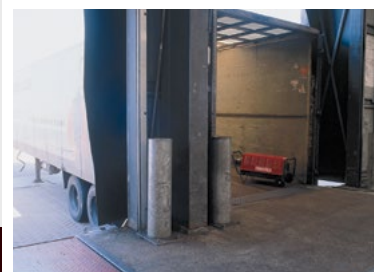
		<b>3 <sup>1</sup></b>	<b>3T <sup>1</sup></b>	<b>12 <sup>2</sup></b>	<b>18 <sup>2</sup></b>
Capacity	<b>kW</b>	3	3	12	18
Power connection	<b>V/ph/Hz</b>	230/1/50	230/1/50	400/3/50	400/3/50
Max. Airflow	<b>m³/h</b>	250	250	600	1.500
Setting range	<b>kW</b>	0-3	0-3	0-6-9-12	0-9-13,5-18
Delta T	<b>°C</b>	60	60	100	90
Power consumption	<b>A</b>	13	13	18	26
Built-in thermostat		✗	✓	✗	✗
Discharge cone Ø	<b>mm</b>	160	160	300	300
Dimensions LxBxH	<b>cm</b>	38*28*39	38*28*39	66*37*45	55*43*58
Weight	<b>kg</b>	11	11	23	28

<b>Item number</b>	<b>40.107.091</b>	<b>40.107.095</b>	<b>40.107.092</b>	<b>40.107.093</b>
--------------------	-------------------	-------------------	-------------------	-------------------



VTB-15000

15kW



## APPLICATIONS

Developed for heating spaces in (new) construction and supporting drying projects with water damage or renovations.

## ACCESSORIES

Accessories see page 36



Air duct

## FEATURES

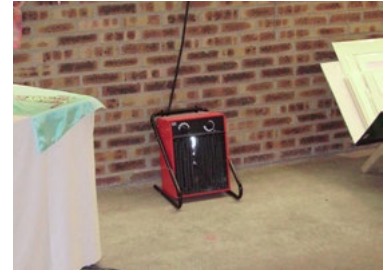
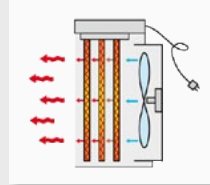
- Double-walled with a corrosion-resistant sheet steel tube and an outer casing.
- Equipped with one or more maximum thermostats that switch off the heating elements in the event of overheating due to low air flow or blockages thereof.
- After cooling down, an automatic reset follows.
- Control by means of built-in thermostat.
- An air duct can be connected for heating hard-to-reach spaces.
- Due to the double jacket, the outside of heater does not become hot in the event of a power failure or malfunction, damage to the surface is thus prevented.
- Design is very robust and extremely suitable for long-term use in harsh conditions.

## TECHNICAL SPECIFICATIONS

<sup>1</sup> with 230 V cable. <sup>2</sup> with 400 V cable + 16 A plug. <sup>3</sup> with 400 V cable + 32 A plug

		3000 <sup>1</sup>	9000 <sup>2</sup>	15000 <sup>3</sup>	18000 <sup>3</sup>
Max. Capacity	kW	3	9	15	18
Power connection	V/ph/Hz	230/1/50	400/3/50	400/3/50-60	400/3/50-60
Max. Airflow	m <sup>3</sup> /h	225	550	1.000	1.000
Setting range	kW	0-3	0-4,5-9	0-6-9-15	0-9-18
Delta T	°C	60	100	36-60-100	70-110
Power consumption	A	13	11,5-13	8-14-23	14-26
Built-in thermostat		✓	✓	✓	✓
Discharge cone Ø	mm	98	120	150	150
Dimensions LxBxH	cm	40*34*31	68*34*31	86*48*52	86*48*52
Weight	kg	11	18	33	33

Item number	40.107.030	40.107.035	40.107.025	40.107.040
-------------	------------	------------	------------	------------


**BX-15**
**15kW**

## APPLICATIONS

Heating of:

- Workshops
- Construction projects
- Drying projects in conjunction with construction dryers
- Smaller rooms

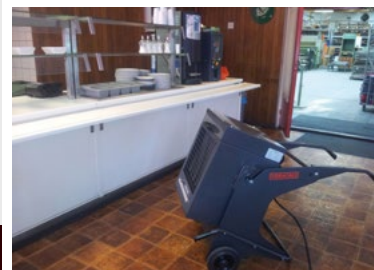
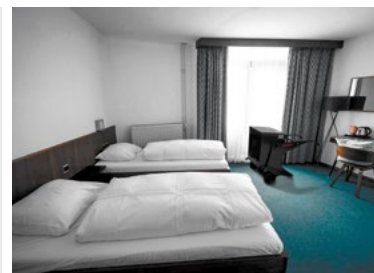
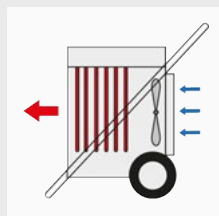
## FEATURES

- Robust heater for professional use.
- Stable handle, also for wall mounting.
- Built-in thermostat.
- Stainless steel heating elements.
- Fixed outlet temperature between 30°C - 60°C.
- Setting range switch with 6 positions for continuous ventilation or switching off via the thermostat.
- Suitable for enclosed spaces.
- Quick to deploy.

## TECHNICAL SPECIFICATIONS

<sup>1</sup> with 230 V cable. <sup>2</sup> with 400 V cable + 16 A plug. <sup>3</sup> with 400 V cable + 32 A plug

		3 <sup>1</sup>	9 <sup>2</sup>	15 <sup>3</sup>	20 <sup>3</sup>	30 <sup>3</sup>
Max. Capacity	kW	3	9	15	20	30
Power connection	V/ph/Hz	230/1/50	400/3/50	400/3/50	400/3/50	400/3/50
Airflow min.	m³/h	-	700	-	-	-
Airflow max.	m³/h	220	900	1.000	1.750	1.900
Setting range	kW	0 - 2 - 3	0 - 4.5 - 9	0 - 7.5 - 15	0 - 10 - 20	0 - 20 - 30
Delta T	°C	38	36 - 28	42	32	47 - 34
Power consumption 230V	A	8.9 - 13.2	6.8 - 13.3	11.2 - 21.9	15 - 29.5	43.4
Dimensions LxBxH	cm	37*28*33	37*35*45	39*52*49	61*57*57	61*57*57
Weight	kg	6	12	13	25	30
Item number		40.107.005	40.107.015	40.107.020	40.107.021	40.107.022



**TBD-18**

**18kW**

## APPLICATIONS

Pest control in hotels, residential homes, food industry, bakeries, industrial kitchens, libraries and archives and in historical buildings.

## FEATURES

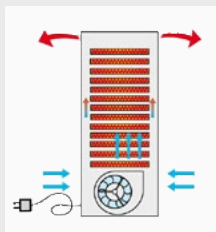
- The unit is equipped with a thermostat that is adjustable to a maximum intake temperature of 55°C which results in an outlet temperature of 75°C minimum.
- The heated air can be directed with precision to the desired location.
- Control possible via external thermostat.
- Multiple safeguards against overheating.
- Pest control without chemical pesticides.
- No build-up of resistance by the pests.
- Highly mobile device with wheels and brackets.
- Effective in all stages of larval growth.
- No danger to humans.
- Simple to commission.

## TECHNICAL SPECIFICATIONS

		18
Capacity	kW	18
Power connection	V/ph/Hz	400/3/50
Airflow max.	m³/h	3.960
Setting range	kW	0-9-18
Delta T	°C	20
Power consumption	A	14-26
Thermostat connection		✓
Built-in thermostat		✓
Dimensions LxBxH	cm	120*70*83
Weight	kg	92

Item number	40.017.000
-------------	------------





**PRO HEAT-18**

**18kW**



**PRO HEAT-18 STATIONARY (On request)**

## APPLICATIONS

For heating (pagoda) tents and showrooms.

## ACCESSORIES

Accessories see page 36



Room thermostat



Extension cable thermostat

## FEATURES

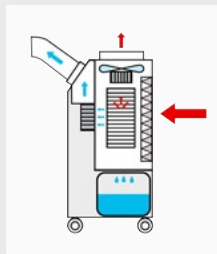
- Equipped with radial fan for powerful heat transfer.
- Electric air heater with built-in thermostat.
- Fixed outlet temperature, two settings 9 and 18 kW.
- Blows out warm air on 3 sides.
- Suitable for enclosed spaces.
- 100% clean and dry heat.
- Stainless steel heating elements.
- Highly efficient heat distribution larger rooms.
- Immediately deployable if electricity is available.
- External thermostat available as an option.
- Easily movable.
- Stationary model without wheels and bracket On request available.
- Ventilation mode possible.

## TECHNICAL SPECIFICATIONS

With 400 V cable + 32 A plug

		18
Capacity	kW	18
Power connection	V/ph/Hz	400/3/50
Airflow max.	m³/h	1.000
Setting range	kW	0 - 9 - 18
Delta T	°C	120
Power consumption	A	13 - 26
Thermostat connection		✓
Built-in thermostat		✓
Dimensions LxBxH	cm	51*40*97
Weight	kg	40

Item number	40.018.000
-------------	------------



## COOLMOBILE-24

7kW

### APPLICATIONS

Cooling of:

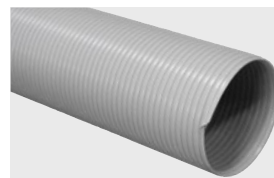
- Electronics and server rooms, factories and workshops.
- Professional kitchens.
- Party tents and halls.

### ACCESSORIES

Accessories see page 36



Hot air duct



Cold air duct extension

### FEATURES

- Quickly deployable as an emergency cooling and/or support.
- Large condensate collection tank.
- Easy to (re)install.
- Low maintenance requirements.
- The air filter, which comes as standard with the unit, is washable and easy to replace.
- Casing with panels made of sturdy galvanised steel, painted with epoxy powder for high resistance to atmospheric agents and aggressive environments.
- The panels are removable to allow quick inspection and maintenance of internal components.
- R1234yf meets the latest environmental requirements.

### TECHNICAL SPECIFICATIONS

		24
Cooling capacity	kW	7.1
Airflow min.	m³/h	800
Airflow max.	m³/h	1.020
Temperature range	°C	10 - 42
Power connection	V/ph/Hz	230/1/50
Power consumption @ 27°C/60%RH	W	2.020
Power consumption @ 27°C/60%RH	A	10
Power consumption at start	A	14
Sound level (3m. outside)	dB	55
Refrigerant		R1234yf
Air outlet diameter warm Ø	mm	400
Air outlet diameter cold Ø	mm	2x125
Dimensions LxBxH	cm	62*50*125
Weight	kg	85

Item number	56.026.000
-------------	------------



**COOLMOBILE-220**

**7kW**



## APPLICATIONS

**The coolmobile-220 is ideal in places where hot air cannot be exhausted through ducts:**

- Computer centres, server rooms.
- Shops, exhibition halls, warehouses.
- Laboratories, etc.
- Marquees, marquees, circuses, etc.

## ACCESSORIES

Accessories see page 36



Connection hose set

## FEATURES

The heat released by the air conditioner, installed indoors, is conducted to the external heat exchanger via flexible water pipes. The refrigerant offers the following advantages: easy installation, variable connection from 5 to 30 m, environmentally friendly and cost-effective. The unit includes a storage tank, so expansion of the fluid and refilling of the pipes are not a problem.

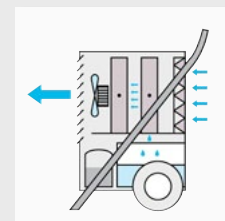
Flexible connection pipes can be easily laid through small holes in walls, suspended ceilings or under marquee walls.

## TECHNICAL SPECIFICATIONS

		220
Cooling capacity	kW	7
Airflow	m <sup>3</sup> /hr	1150 / 1400 / 1500
Delta ΔT	°C	10 - 35
Power connection	V/ph/Hz	230 / 1 / 50
Power consumption @ 25°C/55%RH	kW	2.7
Power consumption @ 25°C/55%RH	A	12
Sound level @3m	dB	49
Refrigerant		R410a
Split length	m	5 - 10 - 20 - 30
Processed volume	m <sup>3</sup>	155
Dimensions - Main LxH	cm	81x36x120
Dimensions - Split LxH	cm	65x34x47
Weight - Main - Split	kg	86 - 16.5
Item number		56.220.000



**PRO DRY-62**



**PRO DRY-96**

## APPLICATIONS

- Dehumidification after e.g. water damage due to leakage.
- Drying of rooms in construction or renovation projects.
- Humidity control.

## FEATURES

- The Pro Dry features a robust metal housing.
- The units are stackable.
- The appliance switches off automatically when the water tank is full.
- Filter easily removable and cleanable
- Easy to connect condensate pump available as an accessory.
- Fitted as standard with hour meter, hygostat and automatic defrosting.

## TECHNICAL SPECIFICATIONS

		44	62	96
Capacity max.	l/24h	44	62	96
Capacity 20°C/60% RH	l/24h	14	19	30
Capacity 27°C/80% RH	l/24h	26	36	60
Capacity 30°C/80% RH	l/24h	36	52	80
Capacity 32°C/90% RH	l/24h	44	62	96
Airflow	m <sup>3</sup> /h	450	550	1.000
Collection tank capacity	l	8	14	14
Temperature working range	°C	7 - 35	7 - 35	7 - 35
Power connection	V/ph/Hz	230/1/50	230/1/50	230/1/50
Power consumption	kW	0.8	0.92	1.48
Power consumption at start	A	16	22	28
Refrigerant		R410A		
Sound level @3m	dB	46	52	52
Dimensions LxBxH	cm	48*50*80	54*52*80	65*58*100
Weight	kg	39	45	56
Item number		99.999.906	99.999.907	99.999.930



**MOBILE FUEL TANK IBC**

**2000L**

## FEATURES

- 2x suction tube ½" and 2x return connection ½" with ball valve.
- Complies with current VLG/ADR and KIWA regulations.
- Can be easily mounted on a trailer.
- 2½" filling opening and 1½" gauge opening with brass cap.
- Lockable pump compartment against theft.
- Venting with outflow protection.
- 1 x 2" and 1 x 1" spare socket with plug.
- 1 x 1" suction tube capped.
- Suitable for outdoor installation, even in water protection areas.
- Mechanical contents gauge.
- Stackable during transport.

## ADVANTAGES

- Available in any RAL colour on request.
- Robust design.

## ACCESSORIES

Tank heating TH370-220W for 995 NLC.	99.999.717
Tank heating TH372-1500W for 2000/3000 NLC.	99.999.718

## TECHNICAL SPECIFICATIONS

MOBILE FUEL TANK IBC		995 NLC	2000 NLC	3000 NLC
Capacity	l	995	2000	3000
Fuel type		Diesel, HVO		
Dimensions LxBxH	cm	156*120*130	219*120*150	309*120*150
Weight empty	kg	465	860	1200
Item number		99.999.995	99.992.000	99.993.000



**FUEL TANK MT**

**700/1000L**

## FEATURES

- Approved for indoor installation, in case of outdoor installation we recommend the optional lockable rain cover.
- Available in 2 sizes: 700 and 1000 litres.
- Plastic (HDPE) inner tank (no corrosion).
- Metal outer tank with 100% collection capacity.
- Multitank trolley optionally available.
- 2" female threaded connections.
- Double-walled.
- Level meter.
- Leak detector.
- TÜV certified.

## ADVANTAGES

- Can be easily moved with the trolley.
- Easily connectable.
- Compact.

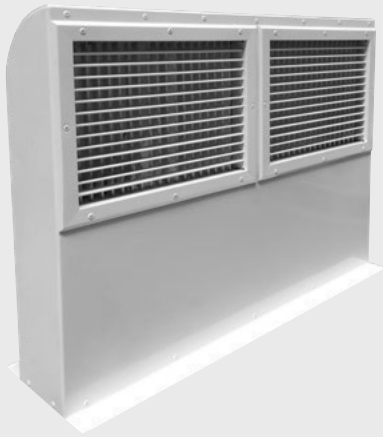
## ACCESSORIES

Connection kit for connecting several Multitanks.	99.999.703
Oil suction set for Multitank.	99.999.707
Rain cover for Multitank.	99.999.820
Tanktrolley (104*145*25cm 82kg)	99.099.100
Tank heating Multitank	99.999.717

## TECHNICAL SPECIFICATIONS

FUEL TANK MT		700	1000
Capacity	l	700	1.000
Fuel type		Diesel, HVO	
Dimensions LxBxH	cm	114*73*119	114*73*163
Weight empty	kg	64	81
Item number		99.999.700	99.999.701





**AIR DISTRIBUTOR**

## FEATURES

Manually adjustable air distribution boxes for an even distribution of warm air. They are minimalistic designed cabinets that fit perfectly into the interior of any location. Easy installation with logistical advantages due to size and weight.

For use with Thermobile heaters with an output of up to 110 kW.

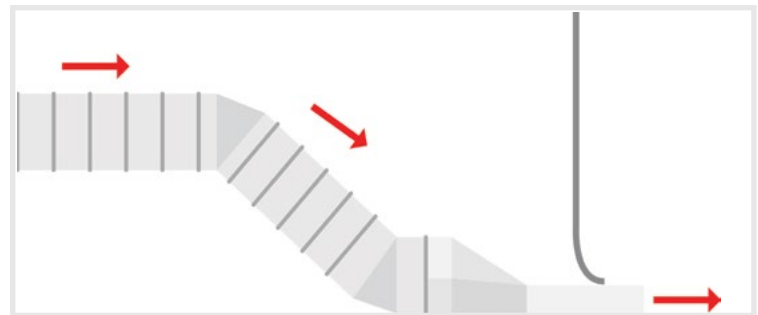
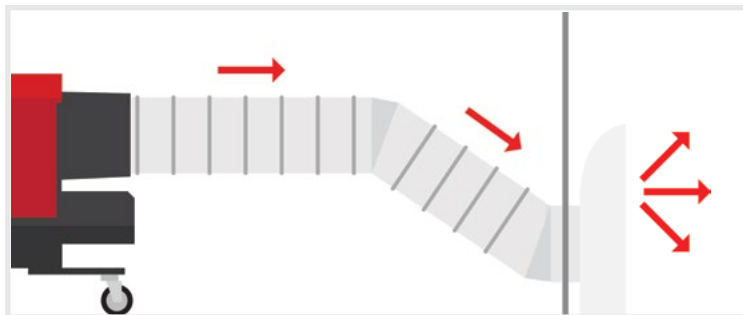


**AIR NOZZLE**

## FEATURES

Easy-to-install air nozzle for heating tents via the underside of the flap.

For use with Thermobile heaters with an output of up to 110 kW.



## TECHNICAL SPECIFICATIONS

AIR DISTRIBUTOR		Ø 400mm	Ø 500mm
Dimensions LxBxH	cm	32*90*71	32*90*71
Weight	kg	21	21
Item number		50.500.450	50.500.500
AIR NOZZLE		Ø 400mm	
Airflow	m³/h	8.000	
Dimensions mouth L*B*H	cm	110*9	
Dimensions LxBxH	cm	85*110*40	
Weight	kg	14	
Item number		98.085.060	
VERLOOPSTUK (mm)		Ø 300 -> 400	
Item number		50.500.475	

calculus



Thermobile, in partnership with the Calculus group, offers a solution for remote monitoring and management of our IMA, IMAC heaters. Due to the small size of the module, our Fleet Manager can be installed on any existing and/or new IMA, IMAC heaters in the control cabinet.

## CLOUD-BASED MANAGEMENT

The user-friendly online environment is easily accessible via computer or via the Calculus app on your mobile device. This only requires login details.

## DATA MONITORING

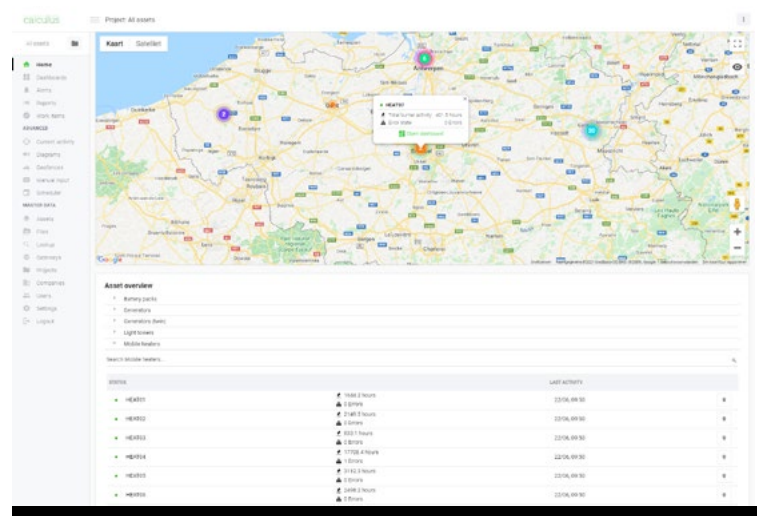
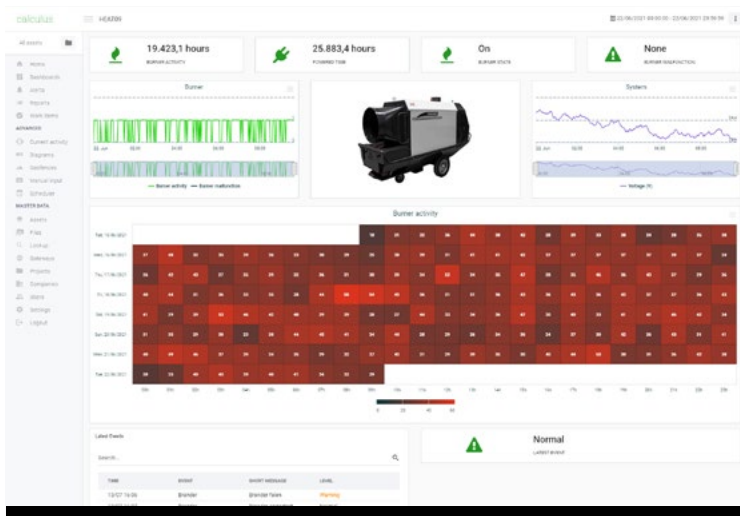
Using Fleet Manager you can manage the activity of every heater in a single overview. In it, you can track the following data:

- Burner hours
- On / off status
- Location
- Power activity
- Faults

## FAULT LOG, PLANNING AND MAINTENANCE

The "Events" screen keeps track of all old and new faults in one clear overview. These are noted with date and type.

The built-in planning makes it easy and convenient to plan and keep track of projects and maintenance, for example.



calculus

To use our Fleet Manager modules, a subscription from Calculus is required. Registering your module and subscribing to Calculus is easily done via [calculus.group/thermobileregistration](https://calculus.group/thermobileregistration). For more information on Calculus, please visit [calculus.group](https://calculus.group)



## Fleet Manager - Essentials

With Fleet Manager Essentials, you have access to all the online management features Thermobile Fleet Manager has to offer. Management is easy via Calculus' online system.

**Suitable for:** IMA & IMAC

**Optional accessories:** 1x Internal temperature sensor



## Fleet Manager - Advanced

The Advanced module is ideally suited for projects where the IMAC is located in locations with poor coverage. The module features an additional external antenna which increases the range of Fleet Manager.

**Suitable for:** IMAC

**Optional accessories:** 1x Internal temperature sensor, External antenna



## Fleet Manager - Premium

In addition to the external antenna, the Premium module also features the ability to connect wireless LoRa temperature and humidity sensors. The LoRa sensors act as a replacement for the wired thermostat and ensure that the heaters operate at the right temperature.

**Suitable for:** IMAC

**Optional accessories:** 2x Internal temperature sensors, External antenna, LoRa



## Fleet Manager - Tank

With the Fleet Manager - Tank module, the fuel level is continuously monitored via a pressure sensor. This transmits the current content to the Fleet Manager platform. If necessary, it can automatically switch to an external tank, preventing interruptions and allowing refuelling to be planned efficiently. Includes 4-year Calculus subscription.

**Suitable for:** MBT & MBSC



**External antenna**

The external antenna extends the range of the module. This makes it possible to run the heater without worry even in remote locations.



**Internal temperature sensors**

When this temperature sensor is fitted, you have a clear overview on the dashboard of what the discharge or intake temperature of the heater.



**LoRa digital thermostat**

The wireless replacement of the room thermostat. Allows for the room temperature to be controlled from the online dashboard or locally via QR-code.

Fleet Manager - Essentials ( IMA-61 & IMA AX )

41.701.002

Fleet Manager - Essentials ( IMA & IMAC )

41.701.003

Fleet Manager - Advanced ( IMAC )

41.701.011

Fleet Manager - Premium ( IMAC )

41.701.021

Fleet Manager Tank - Incl. 4 year subscription

41.701.204

External antenna

41.701.270

Temperature sensor 3m

41.701.253

Temperature sensor 5m

41.701.255

Temperature sensor 8m

41.701.258

LoRa wireless thermostat and humidity sensor

41.701.300

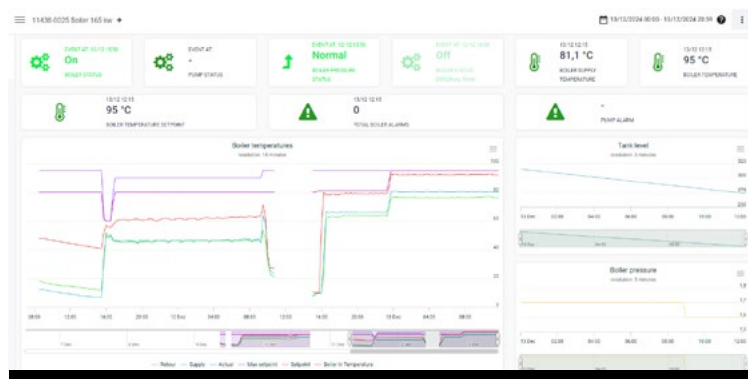
Pressure sensor - Fleet Manager Tank, 3m

41.701.246



## FLEET MANAGER VOOR BOILERS - VOLLEDIG INZICHT EN CONTROLE

Naast onze kachels kunnen ook de Thermobile boilers worden uitgerust met de Fleet Manager voor optimaal beheer en monitoring op afstand. De MBC en MBT modellen zijn voorzien van Calculus hardware die real-time data inzichtelijk maakt. Dit stelt gebruikers in staat om eenvoudig de prestaties en status van hun boilers te volgen en te beheren, zowel vanaf de computer als via de mobiele app.



### OPTIES MBC & MBT

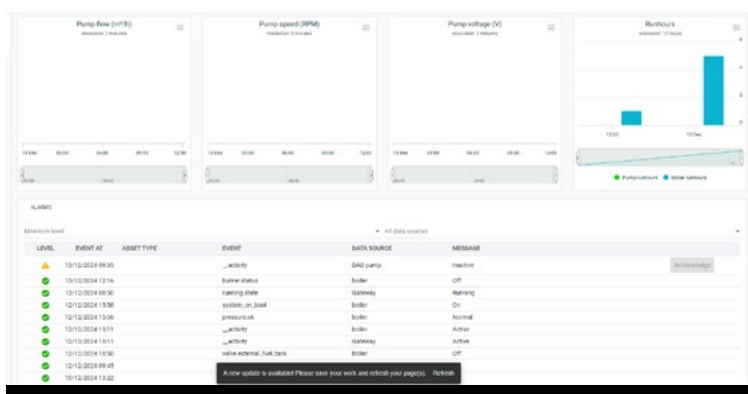
Naast de standaardfunctionaliteiten, zoals het monitoren van branduren, aan/uit-status en storingen, biedt de Fleet Manager voor boilers extra mogelijkheden:

#### ■ Druksensor in het circuit

Een druksensor bewaakt de waterdruk continu, verhoogt de veiligheid en voorkomt schade door tijdig afwijkingen te signaleren.

#### ■ Brandstofvolume

Met tankvolumemeting weet je altijd het resterende brandstofniveau, wat onderhoud en bijvulling beter planbaar maakt.



### MBT

Specifiek voor de MBT-modellen is het mogelijk om aanvullende metingen van de waterpomp uit te voeren:

#### ■ Pompsnelheid


#### ■ Pompstroom

#### ■ Pompspanning





De waterpomp biedt inzicht in pompsnelheid, waterdebiet en spanning. Dit optimaliseert de circulatie, verhoogt de efficiëntie en voorkomt storingen door vroegtijdige detectie van afwijkingen.



## TA


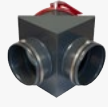


		22	30	40	80
	<b>40.228.405</b>	RT-1 - Room thermostat, -10/+40°C, 5m cable			
	<b>40.228.410</b>	RT-2 - Room thermostat, -10/+40°C, 10m cable			
	<b>40.228.420</b>	RT-3 - Room thermostat, -10/+40°C, 20m cable			
	<b>40.228.120</b>	Room thermostat - 0/+37°C, 10m cable			
	<b>40.000.107</b>	IT-1 - Insert thermostat, 0/100°C, 6m			
	<b>40.202.140</b>	Extention cable thermostat - 10m			
	<b>40.202.087</b>	Thermostat connection			
	<b>40.000.031</b>	Thermostat plug			

## ITA



			35	35R	35RCS	45	75	
	40.228.405	RT-1 - Room thermostat, -10/+40°C, 5m cable	✔	✔	✔	✔	✔	
	40.228.410	RT-2 - Room thermostat, -10/+40°C, 10m cable	✔	✔	✔	✔	✔	
	40.228.420	RT-3 - Room thermostat, -10/+40°C, 20m cable	✔	✔	✔	✔	✔	
	40.228.120	Room thermostat - 0/+37°C, 10m cable	✔	✔	✔	✔	✔	
	40.000.107	IT-1 - Insert thermostat, 0/100°C, 6m	✔	✔	✔	✔	✔	
	40.000.031	Thermostat plug	✔	✔	✔	✔	✔	
	40.202.140	Extention cable thermostat - 10m	✔	✔	✔	✔	✔	
	40.202.087	Thermostat connection	✔	✔	✔	✔	✔	
	41.452.148	CO alarm - Stainless steel case, 15m cable	✘	✘	✔	✘	✘	
	41.352.441	Air tyre set - ITA-35 RCS	✘	✘	✔	✘	✘	
	41.000.562	Chimney pipe - Ø150, 1m, Galvanised	✔	✘	✘	✔	✘	
	41.522.172	Chimney pipe - Ø180, 1m, Galvanised	✘	✘	✘	✘	✔	
	41.000.565	Chimney rain cover - Ø150, Galvanised	✔	✘	✘	✔	✘	
	41.522.175	Chimney rain cover - Ø180, Galvanised	✘	✘	✘	✘	✔	
	41.352.090	Chimney + Built-in rain cover - Ø150, Anthracite	✔	✔	✔	✘	✘	
	41.404.099	Chimney clamp set - ITA-35/45	✔	✘	✘	✔	✘	
	41.750.099	Chimney clamp set - ITA-75/IMA-61	✘	✘	✘	✘	✔	
	41.450.002	Lifting bracket set - ITA-45 Robust	✘	✘	✘	✔	✘	
	41.751.002	Lifting bracket set - ITA-75 Robust	✘	✘	✘	✘	✔	
	99.084.041	Duct coupling set - Ø300, + 1 clamp	✔	✘	✘	✘	✘	
	41.404.152	Duct coupling set - Ø400, + 1 clamp	✘	✘	✘	✔	✔	
	41.218.071	Duct connector set - Ø300, + 2 screw clamps	✘	✘	✘	✘	✘	
	41.404.154	Duct connector set - Ø400, + 2 screw clamps	✘	✘	✘	✘	✘	
	41.000.300	Air duct bend - Ø300, 45°, Aluminium	✔	✘	✘	✘	✘	
	41.000.400	Air duct bend - Ø400, 45°, Aluminium	✘	✘	✘	✔	✔	







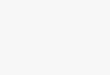



## ITA

			35	35R	35RCS	45	75
	<b>40.107.407</b>	Warm air duct - Ø205, 6m, -45/+145°C, Yellow, End rings	✗	✗	✗	✗	✗
	<b>40.107.408</b>	Warm air duct - Ø305, 6m, -45/+145°C, Yellow, End rings	✓	✓	✗	✗	✗
	<b>40.107.399</b>	Warm air duct - Ø305, 6m, -45/+145°C, Yellow, Bag	✓	✓	✗	✗	✗
	<b>40.107.292</b>	Warm air duct - Ø356, 6m, -45/+145°C, Yellow, Bag	✗	✗	✓	✗	✗
	<b>40.107.410</b>	Warm air duct - Ø407, 6m, -45/+145°C, Yellow	✗	✗	✗	✓	✓
	<b>40.107.293</b>	Recirculation duct - Ø356, 6m, Bag	✗	✗	✓	✗	✗
	<b>41.300.125</b>	Air distribution head - ITA-35, 2xØ200	✓	✓	✗	✗	✗
	<b>41.404.153</b>	Air distribution head - ITA-45/75, 2xØ300	✗	✗	✗	✓	✓
	<b>41.352.055</b>	Y air distributor - ITA-35 RCS, 2xØ356	✗	✗	✓	✗	✗
	<b>41.402.114</b>	Conversion kit 1 to 2 line - ITA	✓	✗	✗	✓	✓
	<b>41.452.128</b>	3-way oil tap set - ITA	✓	✗	✗	✓	✓
	<b>41.530.005</b>	DE-600 - Oil supply set, 60L p/h	✓	✗	✗	✓	✓
	<b>41.522.213</b>	Connection/reducer set + solenoid valve	✓	✗	✗	✗	✗
	<b>41.722.370</b>	Oil filter - ITA/IMA/IMAC/MBC, Heated	✓	✓	✓	✓	✓
	<b>40.467.052</b>	Oil filter and water separator set - ITA/IMA/IMAC/MBC	✓	✓	✓	✓	✓
	<b>40.502.065</b>	Quick coupling band - Ø200, Rubber	✗	✗	✗	✗	✗
	<b>40.502.067</b>	Quick coupling band - Ø300, Rubber	✓	✓	✗	✗	✗
	<b>40.502.069</b>	Quick coupling band - Ø400, Rubber	✗	✗	✗	✓	✓
	<b>41.200.051</b>	Duct clamp - Ø305, Red	✓	✓	✗	✗	✗
	<b>41.404.117</b>	Duct clamp - Ø400, Grey	✗	✗	✗	✓	✓

## IMA


			61	111	150	200
	<b>40.228.405</b>	RT-1 - Room thermostat, -10/+40°C, 5m cable	✓	✓	✓	✓
	<b>40.228.410</b>	RT-2 - Room thermostat, -10/+40°C, 10m cable	✓	✓	✓	✓
	<b>40.228.420</b>	RT-3 - Room thermostat, -10/+40°C, 20m cable	✓	✓	✓	✓
	<b>40.228.120</b>	Room thermostat - 0/+37°C, 10m cable	✓	✓	✓	✓
	<b>40.000.107</b>	IT-1 - Insert thermostat, 0/100°C, 6m	✓	✓	✓	✓
	<b>40.202.140</b>	Extention cable thermostat - 10m	✓	✓	✓	✓
	<b>40.202.087</b>	Thermostat connection	✓	✓	✓	✓
	<b>40.000.031</b>	Thermostat plug	✓	✓	✓	✓
	<b>41.530.005</b>	DE-600 - Oil supply set, 60L p/h	✓	✓	✓	✓
	<b>41.522.213</b>	Connection/reducer set + solenoid valve	✓	✓	✓	✓
	<b>41.722.230</b>	Oil filter and water separator set - IMA/IMAC	✓	✓	✓	✓
	<b>41.722.370</b>	Oil filter - ITA/IMA/IMAC/MBC, Heated	✓	✓	✓	✓
	<b>40.467.052</b>	Oil filter and water separator set - ITA/IMA/IMAC/MBC	✓	✓	✓	✓
	<b>99.999.837</b>	Fuel suction set - IMA/IMAC, 5m, SKM couplings	✓	✓	✓	✓

			61	111	150	200
	<b>41.722.068</b>	Air distribution head - IMA-61, 2xØ300	✓	✗	✗	✗
	<b>41.724.192</b>	Air distribution head - IMA-111/150, 2xØ360	✗	✓	✓	✗
	<b>41.728.177</b>	Air distribution head - IMA-111/150, 4xØ300	✗	✓	✓	✗
	<b>41.724.501</b>	Air distribution head - IMA-111/150, 2xØ400	✗	✓	✓	✗
	<b>41.724.177</b>	Air distribution head - IMA-200, 4xØ300	✗	✗	✗	✓
	<b>41.728.443</b>	Air distribution head - IMA-200, 2xØ400	✗	✗	✗	✓
	<b>41.728.068</b>	Air distribution head - IMA-200, 2xØ500	✗	✗	✗	✓
	<b>40.107.408</b>	Warm air duct - Ø305, 6m, -45/+145°C, Yellow, End rings	✗	✗	✗	✗
	<b>40.107.409</b>	Warm air duct - Ø370, 6m, -45/+145°C, Yellow, End rings	✗	✗	✗	✗
	<b>40.107.410</b>	Warm air duct - Ø407, 6m, -45/+145°C, Yellow, End rings	✓	✗	✗	✗
	<b>40.107.411</b>	Warm air duct - Ø457, 6m, -45/+145°C, Yellow, End rings	✓	✗	✗	✗
	<b>40.107.404</b>	Warm air duct - Ø508, 6m, -45/+145°C, Yellow, End rings	✗	✓	✓	✗
	<b>40.107.405</b>	Warm air duct - Ø610, 6m, -30/+100°C, Yellow, End rings	✗	✗	✗	✓
	<b>41.722.140</b>	Recirculation ring set - IMA-61, Ø300	✓	✗	✗	✗
	<b>41.724.445</b>	Recirculation ring set - IMA-111, Ø400	✗	✓	✗	✗
	<b>41.728.445</b>	Recirculation ring set - IMA-150/200, Ø500	✗	✗	✓	✓
	<b>40.502.067</b>	Quick coupling band - Ø300, Rubber	✗	✗	✗	✗
	<b>40.502.068</b>	Quick coupling band - Ø365, Rubber	✗	✗	✗	✗
	<b>40.502.069</b>	Quick coupling band - Ø400, Rubber	✓	✗	✗	✗
	<b>40.502.071</b>	Quick coupling band - Ø500, Rubber	✗	✓	✓	✓
	<b>40.502.073</b>	Quick coupling band - Ø600, Rubber	✗	✗	✗	✓
	<b>41.404.117</b>	Duct clamp - Ø400, Grey	✓	✗	✗	✗
	<b>41.522.172</b>	Chimney pipe - Ø180, 1m, Galvanised	✓	✗	✗	✗
	<b>41.528.192</b>	Chimney pipe - Ø200, 1m, Galvanised	✗	✓	✓	✓
	<b>41.522.175</b>	Chimney rain cover - Ø180, Galvanised	✓	✗	✗	✗
	<b>41.528.187</b>	Chimney rain cover - Ø200, Galvanised	✗	✓	✓	✓
	<b>41.722.046</b>	Chimney lid - IMA, Ø180	✓	✗	✗	✗
	<b>41.730.034</b>	Chimney lid - IMA/IMAC, Ø200	✗	✓	✓	✓
	<b>41.528.181</b>	Tunnel bushing set - IMA-111/150/200	✓	✓	✓	✓
	<b>41.000.300</b>	Air duct bend - Ø300, 45°, Aluminium				
	<b>41.000.400</b>	Air duct bend - Ø400, 45°, Aluminium	✓	✗	✗	✗
	<b>41.000.500</b>	Air duct bend - Ø500, 45°, Aluminium	✗	✓	✓	✗
	<b>41.722.237</b>	Air tyre set - IMA-61/111/150/200	✓	✓	✓	✓
	<b>On request</b>	Various transport frames.	✓	✓	✓	✓
	<b>41.722.014</b>	Hour counter set - IMA-61	✓	✗	✗	✗
	<b>41.728.235</b>	Hour counter set - IMA-111/150/200	✗	✓	✓	✓
	<b>41.726.241</b>	Soft-start set - IMA-RHP (111/150/200), RSWT-4012, 10 sec	✗	✓	✓	✓
	<b>41.728.203</b>	Soft-start set - IMA-RHP (111/150/200), RSE-4012, 1 sec	✗	✓	✓	✓
	<b>41.728.190</b>	Trafo set - IMA-RHP (111/150/200)	✗	✓	✓	✓
	<b>41.728.258</b>	Trafo set - 24V, IMA	✓	✓	✓	✓


## IMAC

			1200	1500	2000	3000	4000
	<b>40.228.405</b>	RT-1 - Room thermostat, -10/+40°C, 5m cable	✓	✓	✓	✓	✓
	<b>40.228.410</b>	RT-2 - Room thermostat, -10/+40°C, 10m cable	✓	✓	✓	✓	✓
	<b>40.228.420</b>	RT-3 - Room thermostat, -10/+40°C, 20m cable	✓	✓	✓	✓	✓
	<b>40.228.120</b>	Room thermostat - 0/+37°C, 10m cable	✓	✓	✓	✓	✓
	<b>40.000.107</b>	IT-1 - Insteekthermostaat, 0/100°C, 6m	✓	✓	✓	✓	✓
	<b>40.202.140</b>	Extention cable thermostat - 10m	✓	✓	✓	✓	✓
	<b>40.202.087</b>	Thermostat connection	✓	✓	✓	✓	✓
	<b>40.000.031</b>	Thermostat plug	✓	✓	✓	✓	✓
	<b>41.000.300</b>	Air duct bend - Ø300, 45°, Aluminium	✓	✓	✓	✗	✗
	<b>41.000.500</b>	Air duct bend - Ø500, 45°, Aluminium	✓	✓	✓	✗	✓
	<b>41.528.192</b>	Chimney pipe - Ø200, 1m, Galvanised	✓	✓	✓	✗	✗
	<b>41.740.665</b>	Chimney pipe - Ø300, 1m, Galvanised	✗	✗	✗	✓	✓
	<b>41.528.187</b>	Chimney rain cover - Ø200, Galvanised	✓	✓	✓	✗	✗
	<b>41.740.666</b>	Chimney rain cover - Ø300, Galvanised	✗	✗	✗	✓	✓
	<b>41.730.034</b>	Chimney lid - IMA/IMAC, Ø200	✓	✓	✓	✗	✗
	<b>41.740.048</b>	Chimney lid - IMAC, Ø300	✗	✗	✗	✓	✓
	<b>41.729.804</b>	Air distribution head - IMAC-1200/1500/2000, 1xØ500	✓	✓	✓	✗	✗
	<b>41.729.873</b>	Air distribution head - IMAC-1200/1500/2000, 1xØ600	✓	✓	✓	✗	✗
	<b>41.729.997</b>	Air distribution head - IMAC-1200/1500/2000, 2xØ500	✓	✓	✓	✗	✗
	<b>41.729.820</b>	Air distribution head - IMAC-1200/1500/2000, 4xØ300	✓	✓	✓	✗	✗
	<b>41.729.862</b>	Air distribution head - IMAC-2000 S, 6xØ300	✓	✓	✓	✗	✗
	<b>41.740.565</b>	Air distribution head - IMAC-4000, 1xØ800	✗	✗	✗	✗	✓
	<b>41.740.560</b>	Air distribution head - IMAC-4000, 2xØ600	✗	✗	✗	✗	✓
	<b>41.740.050</b>	Air distribution head - IMAC-4000, 3xØ500	✗	✗	✗	✗	✓
	<b>40.107.408</b>	Warm air duct - Ø305, 6m, -45/+145°C, Yellow, End rings	✓	✓	✓	✗	✗
	<b>40.107.404</b>	Warm air duct - Ø508, 6m, -45/+145°C, Yellow, End rings	✗	✗	✗	✗	✓
	<b>40.107.405</b>	Warm air duct - Ø610, 6m, -45/+145°C, Yellow, End rings	✗	✗	✗	✓	✓
	<b>40.107.412</b>	Warm air duct - Ø815, 6m, -45/+145°C, Yellow, End rings	✗	✗	✗	✗	✓
	<b>41.729.878</b>	Recirculation ring set - IMAC, Ø600	✓	✓	✓	✓	✗
	<b>41.522.196</b>	Duct clamp - Ø60-660, Adjustable, Galvanised	✓	✓	✓	✓	✓
	<b>40.502.067</b>	Quick coupling band - Ø300, Rubber	✗	✗	✗	✗	✗
	<b>40.502.071</b>	Quick coupling band - Ø500, Rubber	✓	✓	✗	✗	✗
	<b>40.502.073</b>	Snelkoppelband - Ø600, Rubber	✗	✗	✓	✓	✗
	<b>40.502.075</b>	Quick coupling band - Ø800, Rubber	✗	✗	✗	✗	✓


## IMAC

		1200	1500	2000	3000	4000
	<b>41.530.005</b>	DE-600 - Oil supply set, 60L p/h				
	<b>41.522.213</b>	Connection/reducer set + solenoid valve				
	<b>41.722.230</b>	Oil filter and water separator set - IMA/IMAC				
	<b>41.722.370</b>	Oil filter - ITA/IMA/IMAC/MBC, Heated				
	<b>40.467.052</b>	Oil filter and water separator set - ITA/IMA/IMAC/MBC				
	<b>99.999.837</b>	Fuel suction set - IMA/IMAC, 5m, SKM couplings				
	<b>99.999.838</b>	Fuel suction set - IMAC-4000, 5m, SKM couplings				
	<b>41.729.335</b>	Trafo set - IMAC-2000S, Without 0				




## VAL

		6 1-STEP	6 EPX	6 KB	MIDI
	<b>40.228.405</b>	RT-1 - Room thermostat, -10/+40°C, 5m cable	✓	✓	✓
	<b>40.228.410</b>	RT-2 - Room thermostat, -10/+40°C, 10m cable	✓	✓	✓
	<b>40.228.420</b>	RT-3 - Room thermostat, -10/+40°C, 20m cable	✓	✓	✓
	<b>40.228.120</b>	Room thermostat - 0/+37°C, 10m cable	✓	✓	✓
	<b>40.202.140</b>	Extention cable thermostat - 10m	✓	✓	✓




## BIO ENERGY

		B	1	2	3
	<b>41.900.521</b>	Burner dish - Bio Energy-B/1	✓	✓	✗
	<b>41.910.145</b>	Burner dish - Bio Energy-2/3	✗	✗	✓
	<b>41.906.300</b>	Flue gas heat exchanger - Bio Energy	✓	✓	✓
	<b>41.904.114</b>	Thermo - Airflow amplifier, Bio Energy-B	✓	✗	✗


## GA

		24	42	60	85	110
	<b>40.228.405</b>	RT-1 - Room thermostat, -10/+40°C, 5m cable	✓	✓	✓	✓
	<b>40.228.410</b>	RT-2 - Room thermostat, -10/+40°C, 10m cable	✓	✓	✓	✓
	<b>40.228.420</b>	RT-3 - Room thermostat, -10/+40°C, 20m cable	✓	✓	✓	✓
	<b>40.228.120</b>	Room thermostat - 0/+37°C, 10m cable	✓	✓	✓	✓
	<b>40.000.107</b>	IT-1 - Insert thermostat, 0/100°C, 6m	✓	✓	✓	✓
	<b>40.202.140</b>	Extention cable thermostat - 10m	✓	✓	✓	✓
	<b>40.000.031</b>	Thermostat plug	✓	✓	✓	✓
	<b>40.277.033</b>	Floor/wall bracket - GA-24/42	✓	✓	✗	✗
	<b>40.301.007</b>	Wall bracket - GA-60/85/110 ( 2x required )	✗	✗	✓	✓
	<b>40.707.094</b>	Wheel set - GA-60/85, Plastic	✗	✗	✓	✗
	<b>40.710.124</b>	Wheel set - GA-110, Plastic	✗	✗	✗	✓
	<b>40.252.259</b>	Connection nipple - W21,8X14G/1"LKS	✓	✓	✓	✓
	<b>40.301.025</b>	Gas quick coupling - Female, 3/8"	✓	✓	✓	✗
	<b>40.301.032</b>	Gas quick coupling - Female, 1/2"	✓	✓	✓	✓
	<b>41.000.585</b>	Outside air intake duct - GA/AGA/TAS, Ø100, 10m	✗	✗	✓	✓
	<b>40.721.016</b>	Outside air duct - GA/AGA/TAS, + Rain cover, 10m	✗	✗	✓	✓

## MODULATING SYSTEMS


	<b>40.301.096</b>	Modulating pressure controller - Propane, 230V, GA, 20/40kg
	<b>40.301.019</b>	Modulating pressure controller - Propane, 230V, GA, 60kg, three-point steering
	<b>Modulating pressure controller with servo motor 20/40 kg, control range 0.4-2 bar, connection 1/2"</b>	
	<b>40.301.091</b>	Modulating pressure controller - Propane, 230V, GA, 20/40kg, Three-point steering
	<b>40.301.092</b>	Modulating pressure controller - Propane, 24V, GA, 20/40kg, VDC
	<b>40.301.095</b>	Modulating pressure controller - Propane, 24V, GA, 20/40kg, Three-point control
	<b>Modulating pressure controller with servo motor 60 kg, control range 0.4-2 bar, connection 1/2"</b>	
	<b>40.301.029</b>	Modulating pressure controller - Propane, 230V, GA, 60kg, Three-point control
	<b>40.301.056</b>	Modulating pressure controller - Propane, 24V, GA, 60kg, VDC
	<b>40.301.054</b>	Modulating pressure controller - Propane, 24V, GA, 60kg, Three-point control
	<b>Fire protection - Magnetic valve - Maximum thermostat</b>	
	<b>40.301.045</b>	Fire protection set - Propane, 230V AC, 1/2"
	<b>40.301.046</b>	Fire protection set - Propane, 24V AC, 1/2"
	<b>40.301.047</b>	Solenoid valve - Propane, 230V ac, 1/2"
	<b>40.301.080</b>	Solenoid valve - Propane, 24V dc, 1/2"
	<b>40.301.082</b>	Solenoid valve - Propane, 24V dc, 1/2"
	<b>40.301.049</b>	Maximum room thermostat - 0/50°C, Without cable
	<b>40.301.078</b>	Solenoid valve - Nat.gas/Propane, 230V, 3/4" 150mb
	<b>40.301.089</b>	Solenoid valve - Propane, 230V, 1"

## AGA

			45	75	100	102	111
	<b>40.720.063</b>	Pressure regulator - FRS 507 VEER4, 3/4", 500/10-30mBAR	✓	✓	✓	✓	✓
	<b>40.301.078</b>	Gas solenoid valve for natural gas, to be installed in gas supply pipe.	✓	✓	✓	✓	✓
	<b>40.301.049</b>	Maximum room thermostat - 0/50°C, Without cable	✓	✓	✓	✓	✓
	<b>40.722.018</b>	Modulating pressure controller - AGA-102	✗	✗	✗	✓	✗
	<b>40.722.019</b>	Power expansion - AGA-102, 0-10V	✗	✗	✗	✓	✗
	<b>40.721.060</b>	Outside air intake set - GA/AGA/TAS	✓	✓	✓	✓	✓




## CH

			3(T)	12	18
	<b>40.107.098</b>	Room thermostat - CH-12/18, 2,6m	✗	✓	✓

## VTB

			3000	9000	15/18000
	<b>40.107.275</b>	Warm air duct - Ø120, 5m, -45/+145°C, Grey	✗	✓	✗
	<b>40.107.071</b>	Warm air duct - Ø150, 5m, -45/+145°C, Grey	✗	✗	✓
	<b>40.509.158</b>	Duct clamp - Ø90-110, Adjustable, Galvanised	✓	✗	✗
	<b>40.502.251</b>	Duct clamp - Ø140-160, Adjustable, Galvanised	✗	✗	✓

## PROHEAT

			18
	<b>40.228.405</b>	RT-1 - Room thermostat, -10/+40°C, 5m cable	✓
	<b>40.228.410</b>	RT-2 - Room thermostat, -10/+40°C, 10m cable	✓
	<b>40.228.420</b>	RT-3 - Room thermostat, -10/+40°C, 20m cable	✓
	<b>40.228.120</b>	Room thermostat - 0/+37°C, 10m cable	✓
	<b>40.202.140</b>	Extension cable thermostat - 10m	✓

## COOLMOBILE-24

			24
	<b>98.999.103</b>	Warm air duct - Coolmobile-24, Ø415, 5m, White	✓
	<b>41.522.196</b>	Duct clamp - Ø60-660, Adjustable, Galvanised	✓
	<b>56.016.044</b>	Cold air duct - Coolmobile-24, Ø125, 3m	✓
	<b>56.016.045</b>	Duct connector set - Coolmobile-24, Plastic	✓
	<b>40.228.405</b>	RT-1 - Room thermostat, -10/+40°C, 5m cable	✓
	<b>40.228.410</b>	RT-2 - Room thermostat, -10/+40°C, 10m cable	✓
	<b>40.228.420</b>	RT-3 - Room thermostat, -10/+40°C, 20m cable	✓
	<b>40.228.120</b>	Room thermostat - 0/+37°C, 10m cable	✓
	<b>40.202.140</b>	Extension cable thermostat - 10m	✓

## COOLMOBILE-220

			220
	<b>56.220.005</b>	Connection hose set - Coolmobile-220, 5m	✓
	<b>56.220.010</b>	Connection hose set - Coolmobile-220, 10m	✓
	<b>56.220.020</b>	Connection hose set - Coolmobile-220, 20m	✓
	<b>56.220.030</b>	Connection hose set - Coolmobile-220, 30m	✓

## SERVICE



<b>40.000.185</b>	Manometer - 0-25 Bar, 1-4R, 63mm, Glyc.
<b>40.000.330</b>	Test stand - Satronic, Gas, UP-712
<b>40.000.349</b>	Adapter nipple manometer - 1/8" Bu x 1/4" BI
<b>60.530.075</b>	Spray paint can - 400ml, RAL-3003, Red
<b>60.530.077</b>	Spray paint can - 400ml, RAL-7016, Anthracite

SPECIFICATIONS IN PACKAGING (KG/CM)

		Weight	Length	Width	Height
TA-22		34	110	50	60
TA-30		34	110	50	60
TA-40		62	108	57	81
TA-80		85	129	67	94
ITA-35		76	129	52	85
ITA-45		138	173	69	105
ITA-45 Robust		170	186	69	121
ITA-75		175	202	75	128
ITA-75 Robust		192	202	75	133
ITA-35 R		75	129	67	82
ITA-35 RCS		90	130	52	98
IMA-61 AX		250	203	75	145
IMA-61 RAD		275	203	75	145
IMA-111 AX		325	180	80	142
IMA-111 RDD		450	240	100	172
IMA-111 RHP		440	240	100	172
IMA-150 RAD		525	265	95	172
IMA-150 RHP		525	265	95	172
IMA-200 RAD		588	290	104	172
IMA-200 RHP		588	290	104	172
VAL-6 1-STEP	Box 1	25	64	70	72
	Box 2	23	63	67	42
	Box 3	9	42	42	32
VAL-6 EPX		59	71	95	102
VAL-6 KB		61	70	66	93
VAL MIDI		43	69	67	93
BIO ENERGY-B		80	90	62	131
BIO ENERGY-1		91	90	62	131
BIO ENERGY-2		178	102	88	124
BIO ENERGY-3		195	102	88	144
GA-24		20	70	40	50
GA-42		20	70	40	50
GA-60		41	110	50	60
GA-85		41	110	50	60
GA-110		71	129	67	94
AGA-45		52	113	85	60
AGA-75		67	113	85	70
AGA-100		110	155	75	101
AGA-102		110	155	75	101
AGA-111		110	155	75	101

SPECIFICATIONS IN PACKAGING (KG/CM)

	Weight	Length	Width	Height
CH-3	13	38	28	38
CH-3 T	13	38	28	38
CH-12	25	65	37	45
CH-18	30	55	42	58
VTB-3000	12	45	36	35
VTB-9000	21	72	36	35
VTB-15000	39	102	46	51
VTB-18000	39	102	46	51
BX-3	7	36	28	34
BX-9	14	40	36	49
BX-15	15	40	36	49
BX-20	29	51	44	69
BX-30	34	51	44	69
TBD-18	64	129	67	96
PRO HEAT-18	53	107	57	70
COOLMOBILE SK-24	87	70	60	150
PRO DRY-44	40	44	43	77
PRO DRY-62	47	60	60	84
PRO DRY-96	58	50	57	100



## DIESEL

Diesel is a liquid fossil fuel produced from crude oil.

**Suitable for :**

All diesel fired heaters from Thermobile.



## BIODIESEL FAME

Biodiesel FAME ( Fatty Acid Methyl Esters ) is a non-fossil liquid fuel produced from sources such as vegetable oils, animal fats or algae.

This biodiesel is blended with standard diesel (B7) but is also available in pure form (B100).

**Suitable for :**

Bio Energy

FAME has considerable disadvantages for use in our standard diesel stoves such as clogging, bacterial growth and deterioration of the various flexible pipes and we therefore do not recommend this fuel.



## BIODIESEL HVO

HVO ( Hydrotreated Vegetable Oil ) is a non-fossil liquid fuel produced from sources such as vegetable oils and animal fats. This type of fuel is also known as renewable diesel.

Unlike FAME, HVO is a 100% substitute for diesel without the need for equipment modifications.

**Suitable for :**

All diesel fired heaters from Thermobile.



## GTL

GTL ( Gas To Liquid ) is een vloeibare fossiele dieselbrandstof gemaakt van aardgas. Dit type brandstof verbrandt schoner dan conventionele diesel.

**Suitable for :**

All diesel fired heaters from Thermobile.



## KEROSINE/PETROLEUM

Kerosine is a fossil liquid fuel. It is important to determine the viscosity of the type of paraffin used to determine whether settings (pump pressure) in the heater need to be adjusted differently.

In addition, due to a low lubricant content kerosine will accelerate wear and tear.

There are different types of kerosine used for military applications and we therefore recommend contacting Thermobile if in doubt about its use in our heaters. When using kerosine we recommend using diesel on a regular intermittend basis to lubricate the oil circuit.

**Suitable for :**

All diesel fired heaters from Thermobile.





## NATURAL GAS

Natural gas is a fossil fuel used for a wide range of applications. In Europe, we know two categories; high-calorific gas (G20) and low-calorific gas (G25). When ordering AGA series heaters, it is important to specify exactly which gas will be used.

### **Suitable for :**

AGA and models of diesel fired heaters with natural gas burner.



## PROPANE

Propane gas (G31) is a fossil fuel that is transported and used in a liquid gas form. Propane gas is the fuel for the GA/AGA heaters in Thermobile's range. There are also options to replace diesel burners in the standard diesel fired heaters with propane gas burners.

### **Suitable for :**

GA, AGA (except AGA-102) and diesel fired heaters with propane gas burner.



## ELECTRICITY

Electricity is an energy source that is generated in a variety of ways, including fossil fuels, nuclear, hydropower, wind, solar and other renewable sources.

### **Suitable for :**

All electric heaters and related equipment.



## METHANOL

There are currently two types of methanol, fossil based methanol and CO<sub>2</sub> neutral biomethanol, both in liquid form.

A CO<sub>2</sub> neutral synthetic Methanol is currently under development. Biomethanol is extracted from biomass and can also be classified among renewable energy sources.

Biomethanol and synthetic Methanol are seen as future replacements for diesel and other fossil fuels because of clean combustion; the flue gases consist mainly of water vapour and CO<sub>2</sub>.

### **Suitable for :**

All Thermobile IMAs and IMACs

Methanol cannot be used on Thermobile heaters without modifications. Special conversion kits have been developed and on request, the heaters can also be produced for methanol from factory.

Lined area for notes.





## **THERMOBILE INDUSTRIES BV**

Konijnenberg 80  
4825 BD Breda  
The Netherlands

T +31 (0)76 587 34 50  
info@thermobile.com  
www.thermobile.com



## **THERMOBILE UK Ltd**

12, Buckingham Close  
Bermuda Industrial Estate  
Nuneaton, Warwickshire  
CV10 7JT  
Great-britain

T +44 (0)2476 35 79 60  
F +44 (0)2476 35 79 69  
info@thermobile.co.uk  
www.thermobile.co.uk



## **THERMOBILE France sarl**

3, rue Denis Papin  
45240 La Ferté St. Aubin  
France

T +33 (0)2 38 76 59 25  
info@thermobile.fr  
www.thermobile.fr

# **THERMOBILE**